



855 westglen Village
Latitude: 38.577679
Longitude: -90.563942

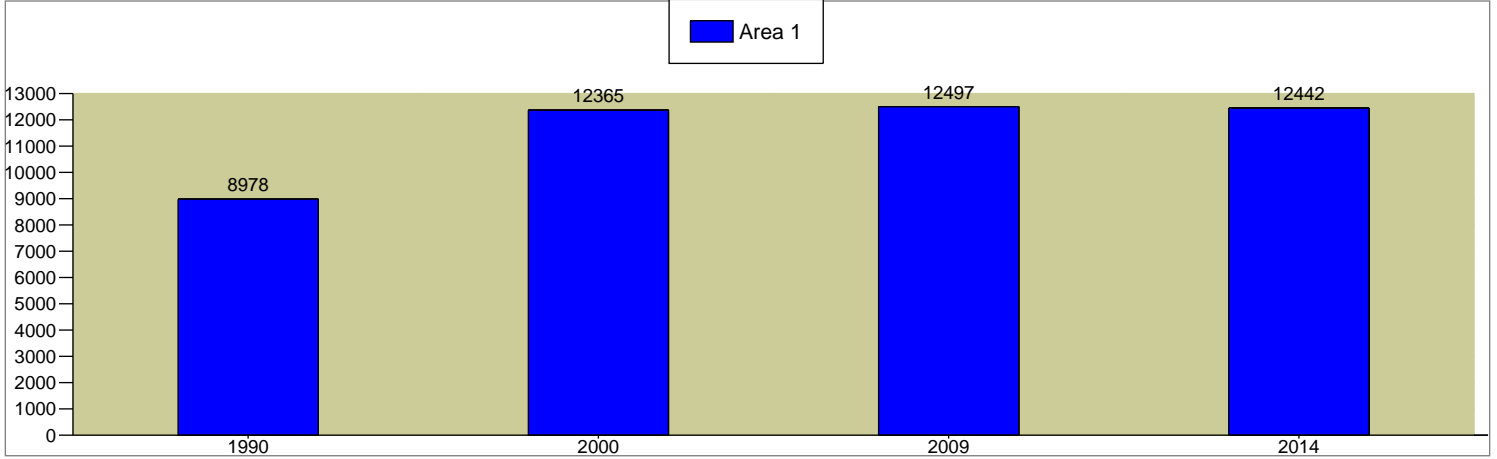
855 Westglen Village Dr
Ganz Tract
Radius: 1 Miles

855 Westglen Village Dr
Ganz Tract
Radius: 3 Miles

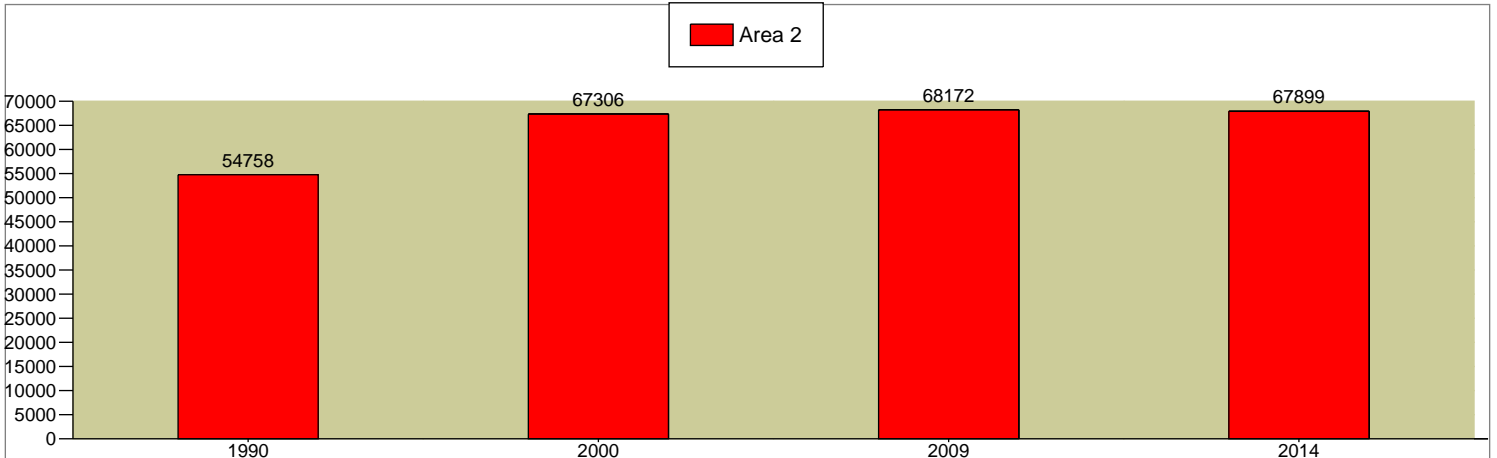
855 Westglen Village Dr
Ganz Tract
Radius: 5 Miles

2000 - 2009 Population Annual Rate	0.11%	0.14%	0.13%
2009 - 2014 Population Annual Rate	-0.09%	-0.08%	-0.07%

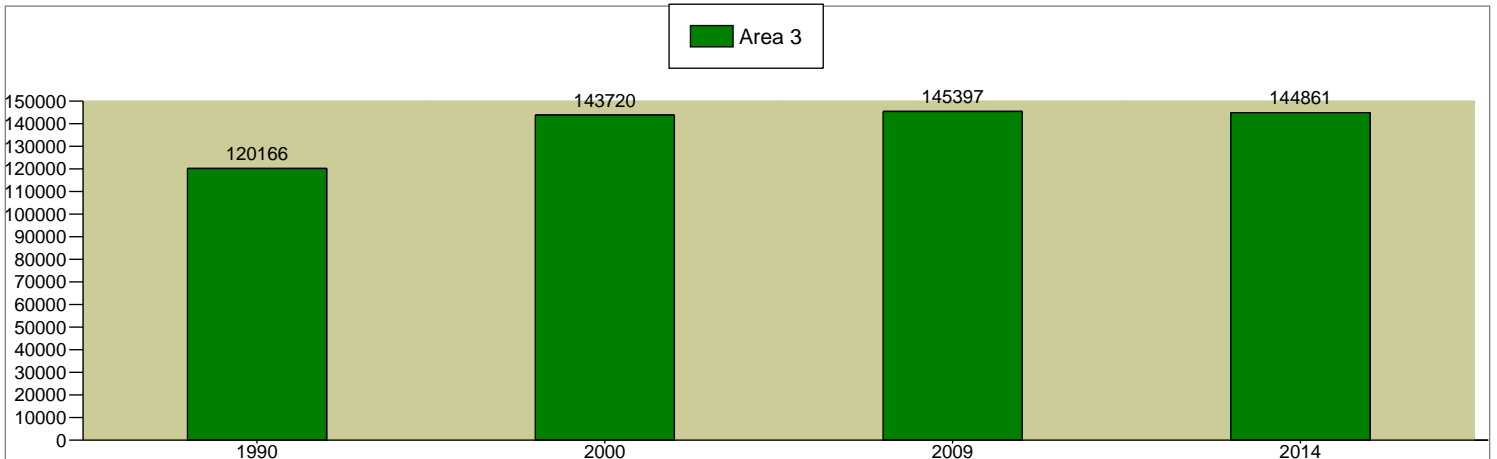
Total Population



Total Population



Total Population



Source: U.S. Bureau of the Census, 2000 Census of Population and Housing. ESRI converted 1990 Census data into 2000 geography. ESRI forecasts for 2009 and 2014.



855 westglen Village
 Latitude: 38.577679
 Longitude: -90.563942

855 Westglen Village Dr
 Ganz Tract
 Radius: 1 Miles

855 Westglen Village Dr
 Ganz Tract
 Radius: 3 Miles

855 Westglen Village Dr
 Ganz Tract
 Radius: 5 Miles

2000 Population by Sex

Males	48.6%	48.5%	48.5%
Females	51.4%	51.5%	51.5%

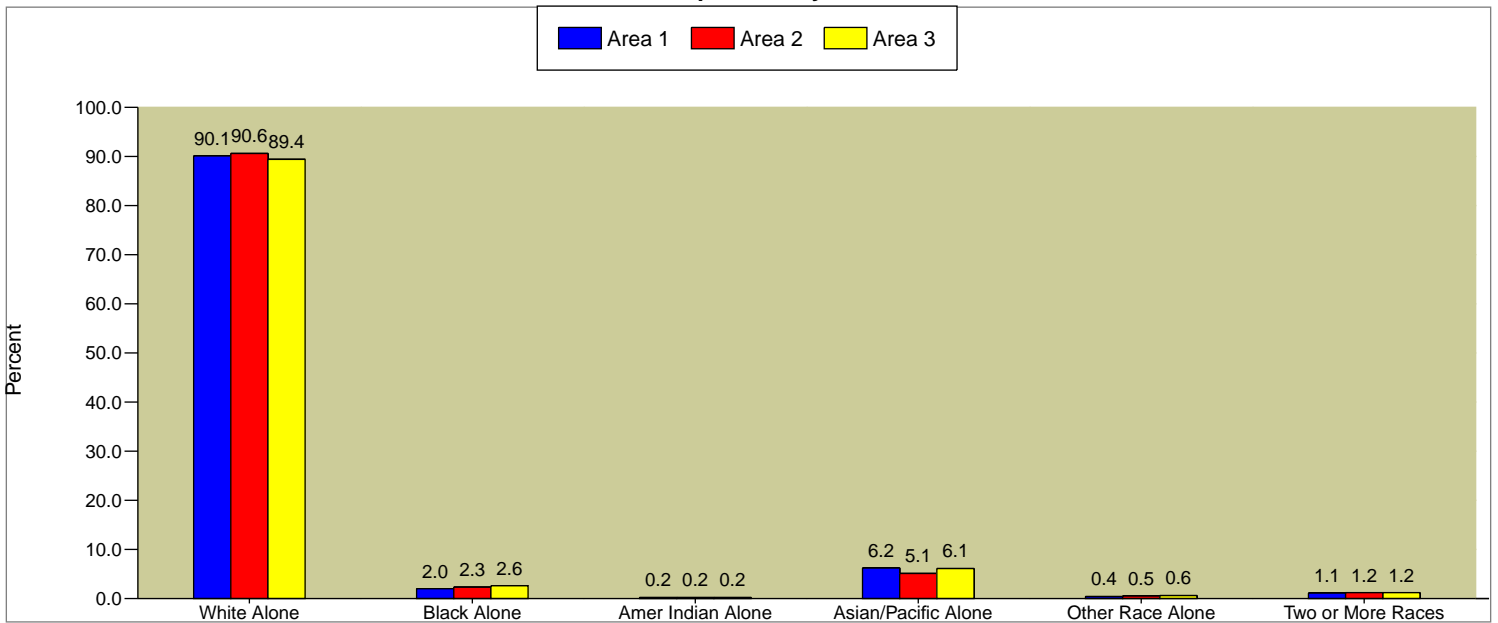
2009 Population by Sex

Males	48.5%	48.5%	48.5%
Females	51.5%	51.5%	51.5%

2014 Population by Sex

Males	48.4%	48.5%	48.5%
Females	51.6%	51.5%	51.5%

2009 Population by Race



2009 Hispanic Origin	1.9%	2.3%	2.2%
----------------------	------	------	------

2009 Population 15+ by Marital Status

Total	9,201	52,328	113,170
Never Married	22.8%	22.4%	22.9%
Married	66.3%	64.6%	64.4%
Widowed	2.5%	4.5%	4.5%
Divorced	8.3%	8.6%	8.2%

2009 Population 25+ by Educational Attainment

Total	7,795	44,464	96,391
Less than 9th Grade	0.4%	1.4%	1.2%
9th - 12th Grade, No Diploma	2.8%	3.0%	2.6%
High School Graduate	16.8%	16.2%	14.5%
Some College, No Degree	19.0%	20.6%	19.1%
Associate Degree	7.0%	6.3%	6.2%
Bachelor's Degree	34.9%	33.4%	35.4%
Graduate/Professional Degree	19.2%	19.0%	21.0%

Data Note: Persons of Hispanic Origin may be of any race

Source: U.S. Bureau of the Census, 2000 Census of Population and Housing. ESRI forecasts for 2009 and 2014.



Multifamily Express Pack

Prepared by STDBOnline

855 westglen Village
Latitude: 38.577679
Longitude: -90.563942

855 Westglen Village Dr
Ganz Tract
Radius: 1 Miles

855 Westglen Village Dr
Ganz Tract
Radius: 3 Miles

855 Westglen Village Dr
Ganz Tract
Radius: 5 Miles

2000 Population by Age

	855 Westglen Village Dr Ganz Tract Radius: 1 Miles	855 Westglen Village Dr Ganz Tract Radius: 3 Miles	855 Westglen Village Dr Ganz Tract Radius: 5 Miles
Total	12,366	67,310	143,718
0 - 4	8.7%	7.6%	7.3%
5 - 9	9.7%	8.3%	7.9%
10 - 14	9.5%	8.2%	8.1%
15 - 19	7.1%	6.8%	6.9%
20 - 24	3.5%	3.8%	4.1%
25 - 34	11.8%	12.0%	11.9%
35 - 44	21.8%	19.3%	18.4%
45 - 54	15.5%	15.2%	16.3%
55 - 64	6.2%	8.7%	9.2%
65 - 74	4.0%	5.9%	5.7%
75 - 84	1.9%	3.2%	3.1%
85+	0.4%	1.0%	1.1%

2009 Population by Age

	855 Westglen Village Dr Ganz Tract Radius: 1 Miles	855 Westglen Village Dr Ganz Tract Radius: 3 Miles	855 Westglen Village Dr Ganz Tract Radius: 5 Miles
Total	12,498	68,173	145,396
0 - 4	8.6%	7.2%	6.8%
5 - 9	8.9%	7.8%	7.4%
10 - 14	8.9%	8.2%	7.9%
15 - 19	7.3%	7.0%	6.9%
20 - 24	3.9%	4.5%	4.6%
25 - 34	11.0%	9.9%	10.5%
35 - 44	17.7%	15.1%	14.5%
45 - 54	17.1%	17.1%	17.0%
55 - 64	9.8%	11.7%	12.7%
65 - 74	4.1%	6.2%	6.4%
75 - 84	2.1%	3.8%	3.7%
85+	0.6%	1.4%	1.5%

2014 Population by Age

	855 Westglen Village Dr Ganz Tract Radius: 1 Miles	855 Westglen Village Dr Ganz Tract Radius: 3 Miles	855 Westglen Village Dr Ganz Tract Radius: 5 Miles
Total	12,444	67,898	144,859
0 - 4	8.5%	7.0%	6.7%
5 - 9	8.8%	7.7%	7.3%
10 - 14	8.8%	8.2%	7.8%
15 - 19	6.9%	7.1%	6.9%
20 - 24	4.0%	4.7%	4.8%
25 - 34	11.9%	10.9%	11.2%
35 - 44	16.7%	13.1%	13.2%
45 - 54	15.6%	16.1%	15.8%
55 - 64	10.4%	12.4%	13.0%
65 - 74	5.4%	7.6%	8.1%
75 - 84	2.2%	3.7%	3.7%
85+	0.6%	1.5%	1.6%

Median Age

	855 Westglen Village Dr Ganz Tract Radius: 1 Miles	855 Westglen Village Dr Ganz Tract Radius: 3 Miles	855 Westglen Village Dr Ganz Tract Radius: 5 Miles
2000	34.8	36.7	37.1
2009	35.8	38.9	39.4
2014	35.6	38.7	39.3

Source: U.S. Bureau of the Census, 2000 Census of Population and Housing. ESRI forecasts for 2009 and 2014.



855 westglen Village
Latitude: 38.577679
Longitude: -90.563942

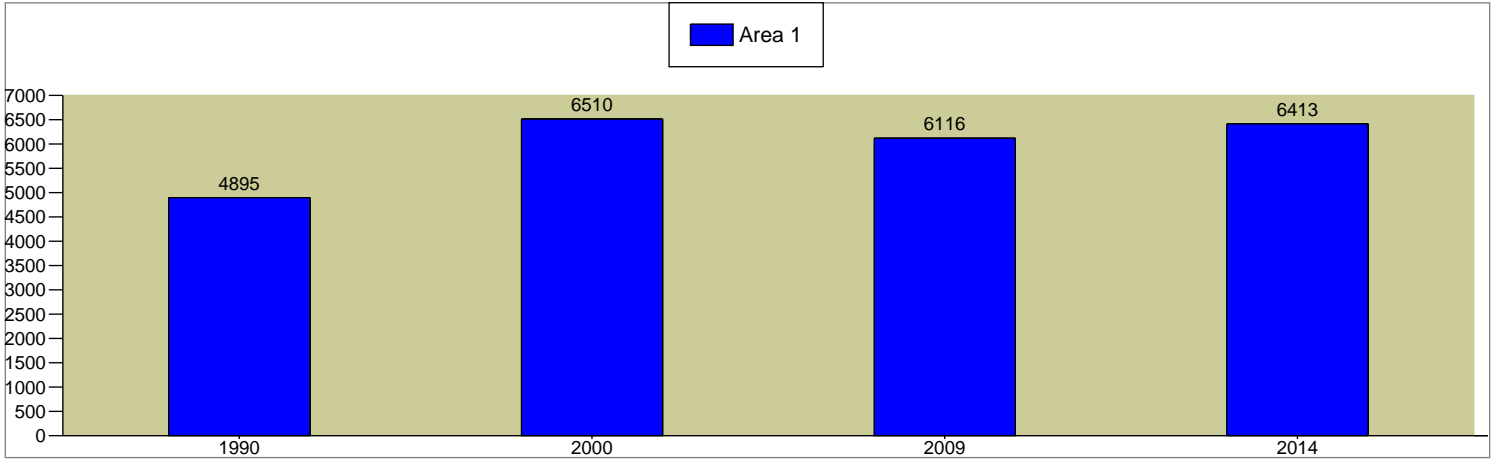
855 Westglen Village Dr
Ganz Tract
Radius: 1 Miles

855 Westglen Village Dr
Ganz Tract
Radius: 3 Miles

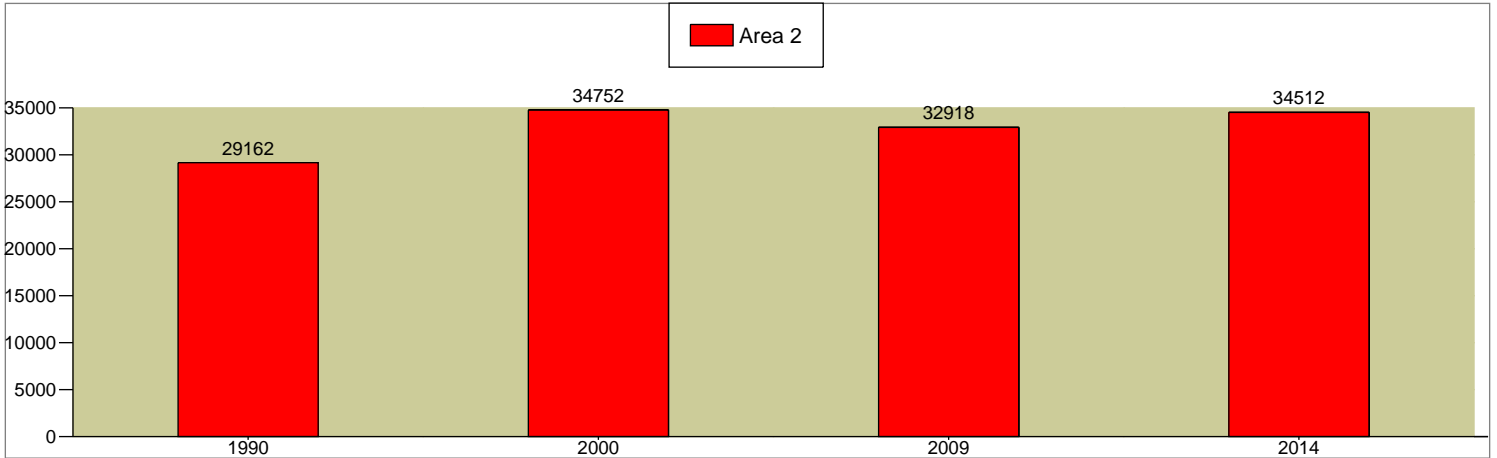
855 Westglen Village Dr
Ganz Tract
Radius: 5 Miles

2000 - 2009 Civilian Employed Population 16+ Annual Rate	-0.67%	-0.58%	-0.54%
2009 - 2014 Civilian Employed Population 16+ Annual Rate	0.95%	0.95%	0.97%

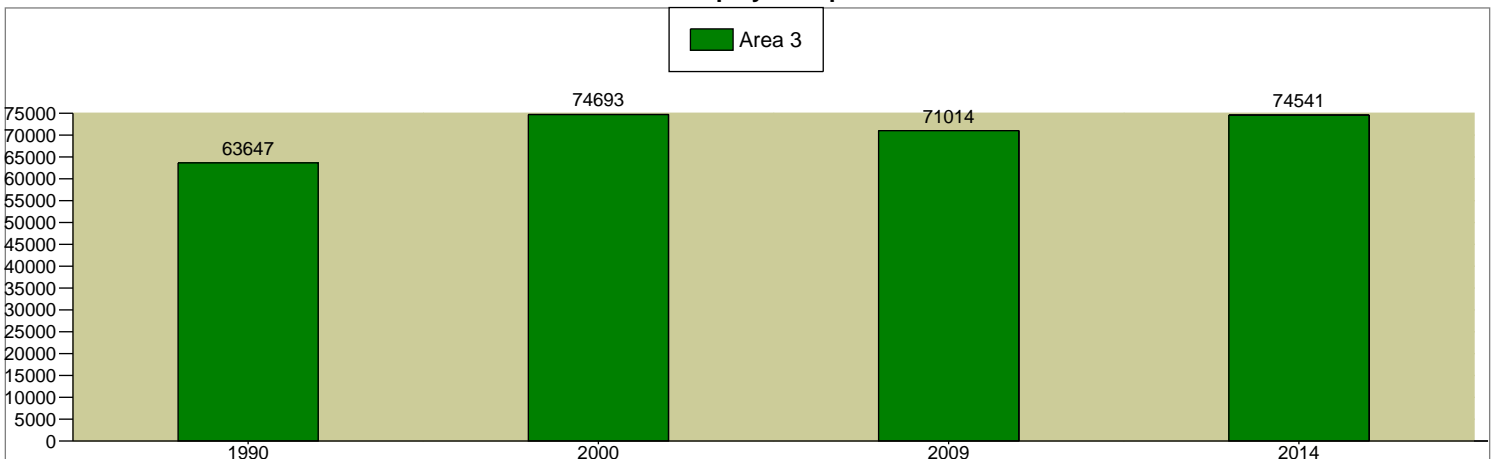
Total Civilian Employed Population 16+



Total Civilian Employed Population 16+



Total Civilian Employed Population 16+



Source: U.S. Bureau of the Census, 2000 Census of Population and Housing. ESRI converted 1990 Census data into 2000 geography. ESRI forecasts for 2009 and 2014.



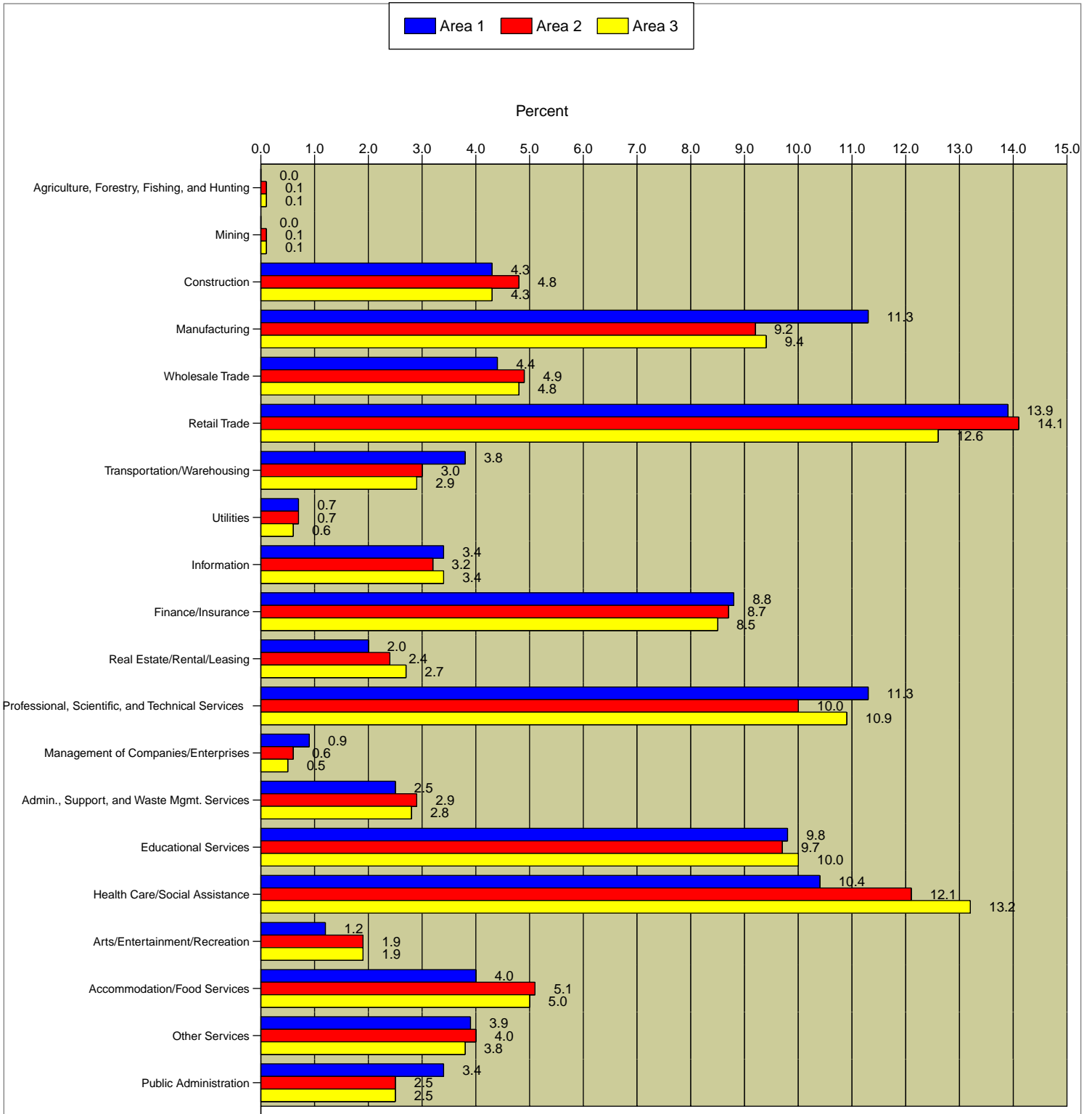
855 Westglen Village
 Latitude: 38.577679
 Longitude: -90.563942

855 Westglen Village Dr
 Ganz Tract
 Radius: 1 Miles

855 Westglen Village Dr
 Ganz Tract
 Radius: 3 Miles

855 Westglen Village Dr
 Ganz Tract
 Radius: 5 Miles

2009 Employed Civilian Population 16+ by Industry



Data Note: Industry descriptions based on 2000 Census of Population and Housing definitions.

Source: ESRI forecasts for 2009.



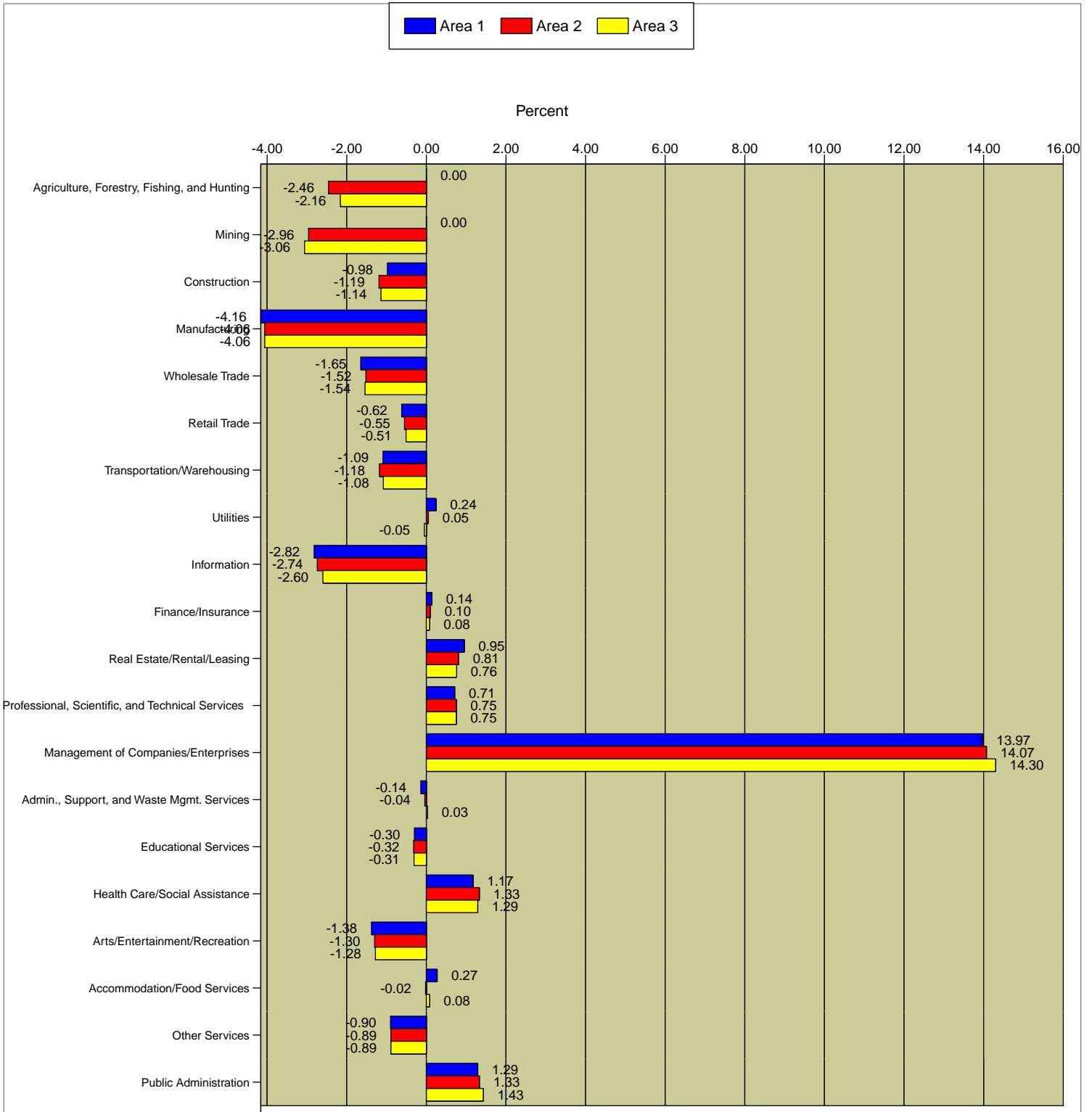
855 westglen Village
 Latitude: 38.577679
 Longitude: -90.563942

855 Westglen Village Dr
 Ganz Tract
 Radius: 1 Miles

855 Westglen Village Dr
 Ganz Tract
 Radius: 3 Miles

855 Westglen Village Dr
 Ganz Tract
 Radius: 5 Miles

2000 - 2009 Population by Industry Annual Rate



Data Note: Industry descriptions based on 2000 Census of Population and Housing definitions.

Source: ESRI forecasts for 2009.



855 westglen Village

Latitude: 38.577679

Longitude: -90.563942

855 Westglen Village Dr

Ganz Tract

Radius: 1 Miles

855 Westglen Village Dr

Ganz Tract

Radius: 3 Miles

855 Westglen Village Dr

Ganz Tract

Radius: 5 Miles

2000 - 2009 Households Annual Rate

0.27%

0.34%

0.37%

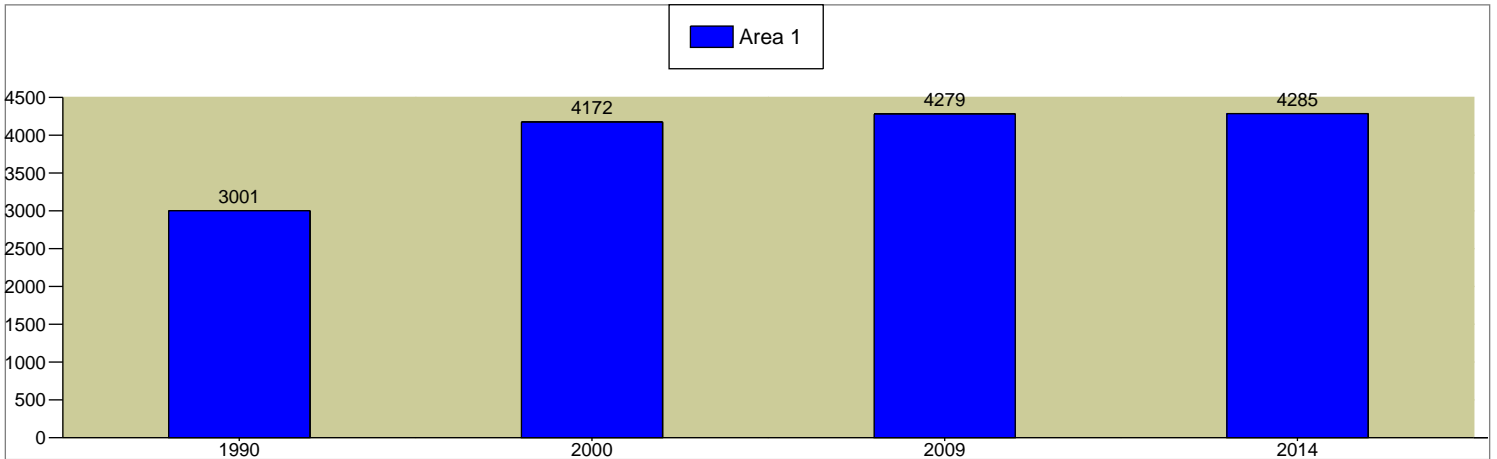
2009 - 2014 Households Annual Rate

0.03%

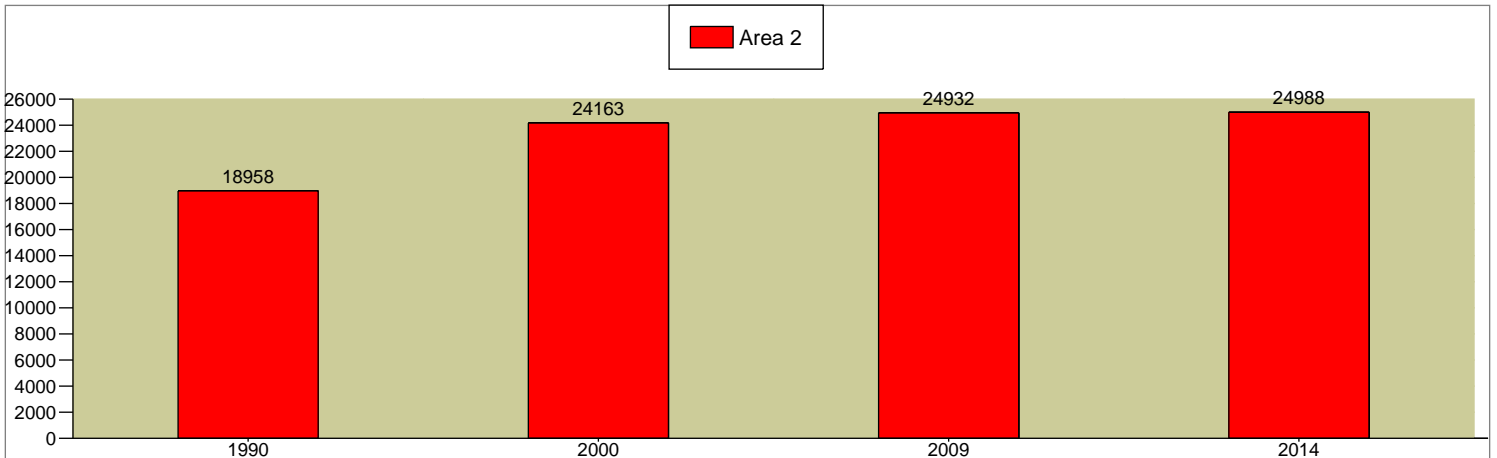
0.04%

0.07%

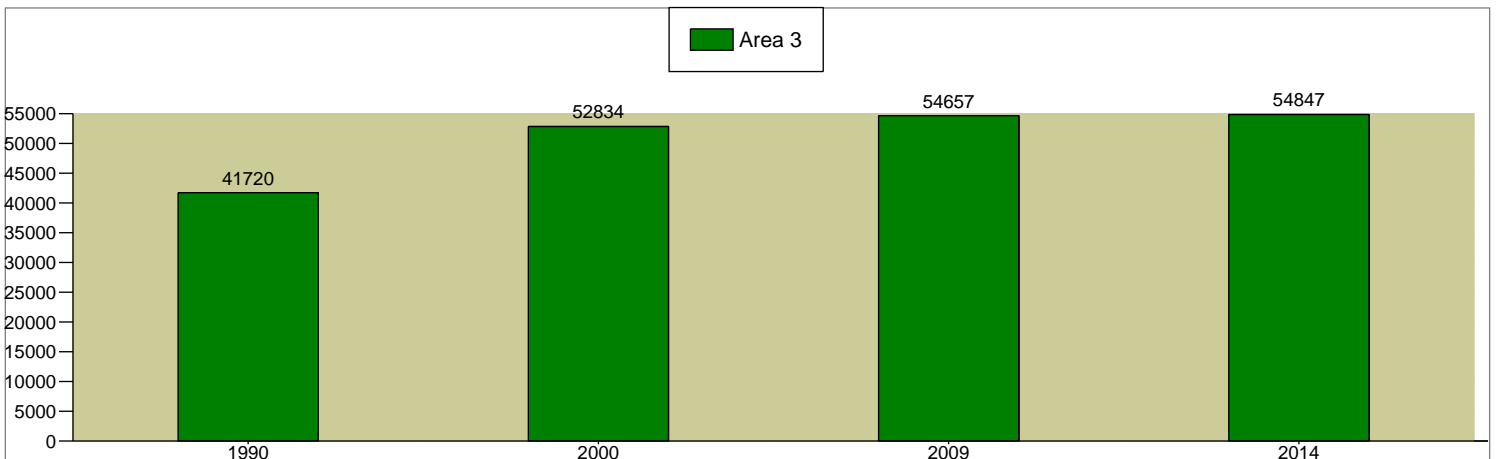
Total Households



Total Households



Total Households



Source: U.S. Bureau of the Census, 2000 Census of Population and Housing. ESRI converted 1990 Census data into 2000 geography. ESRI forecasts for 2009 and 2014.



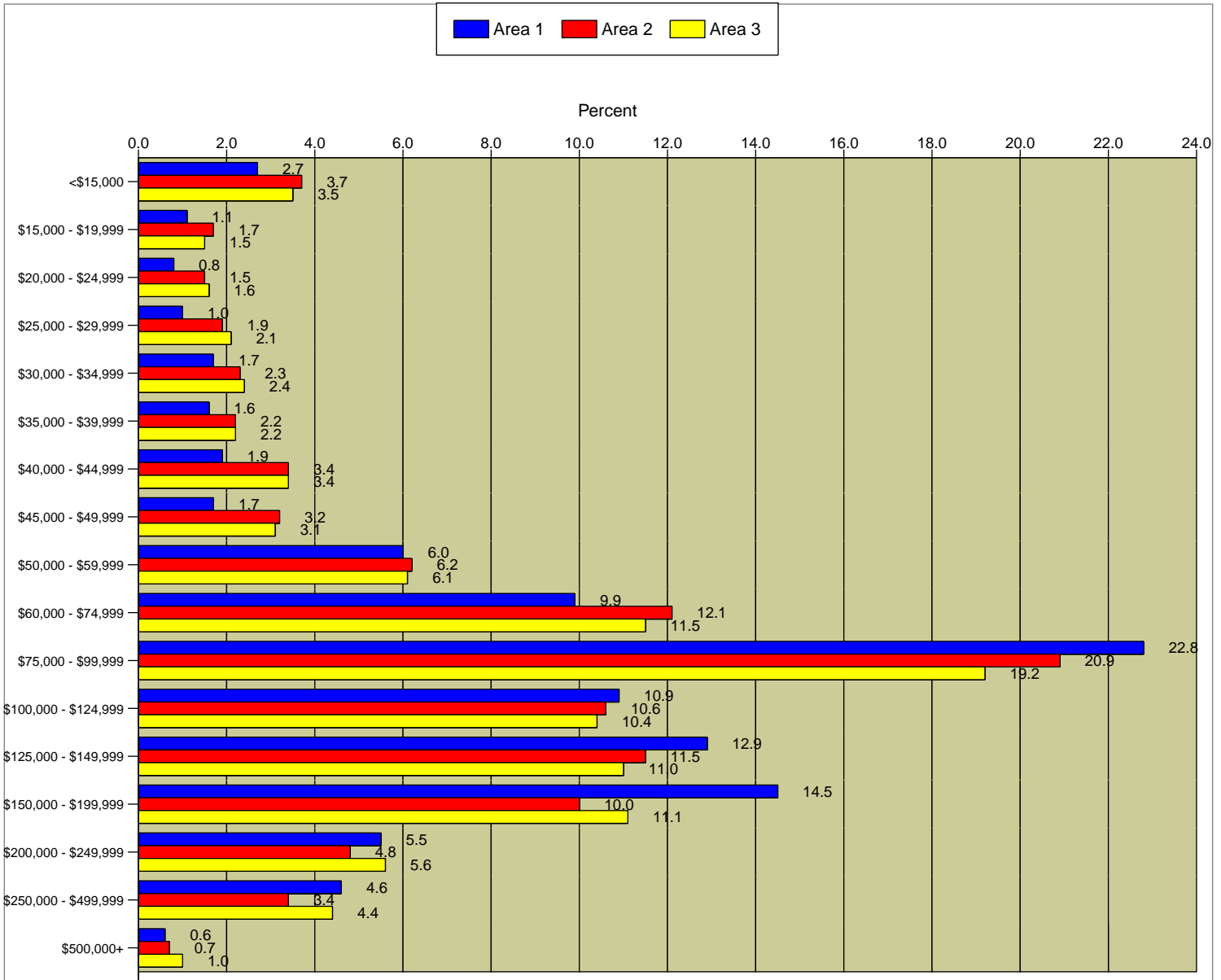
855 westglen Village
 Latitude: 38.577679
 Longitude: -90.563942

855 Westglen Village Dr
 Ganz Tract
 Radius: 1 Miles

855 Westglen Village Dr
 Ganz Tract
 Radius: 3 Miles

855 Westglen Village Dr
 Ganz Tract
 Radius: 5 Miles

2009 Household Income



Median Household Income

2000	\$76,286	\$68,494	\$71,931
2009	\$98,464	\$87,023	\$89,524
2014	\$99,425	\$89,443	\$91,934
2000 - 2009 Median Household Income Annual Rate	2.8%	2.62%	2.39%
2009 - 2014 Median Household Income Annual Rate	0.19%	0.55%	0.53%

2009 Median Net Worth \$359,433 \$320,265 \$347,280

Data Note: Detail may not sum to totals due to rounding. Income represents annual income for the preceding year. Income for 2009 and 2014 is expressed in current dollars, including an adjustment for inflation.

Source: U.S. Bureau of the Census, 2000 Census of Population and Housing. ESRI forecasts for 2009 and 2014.

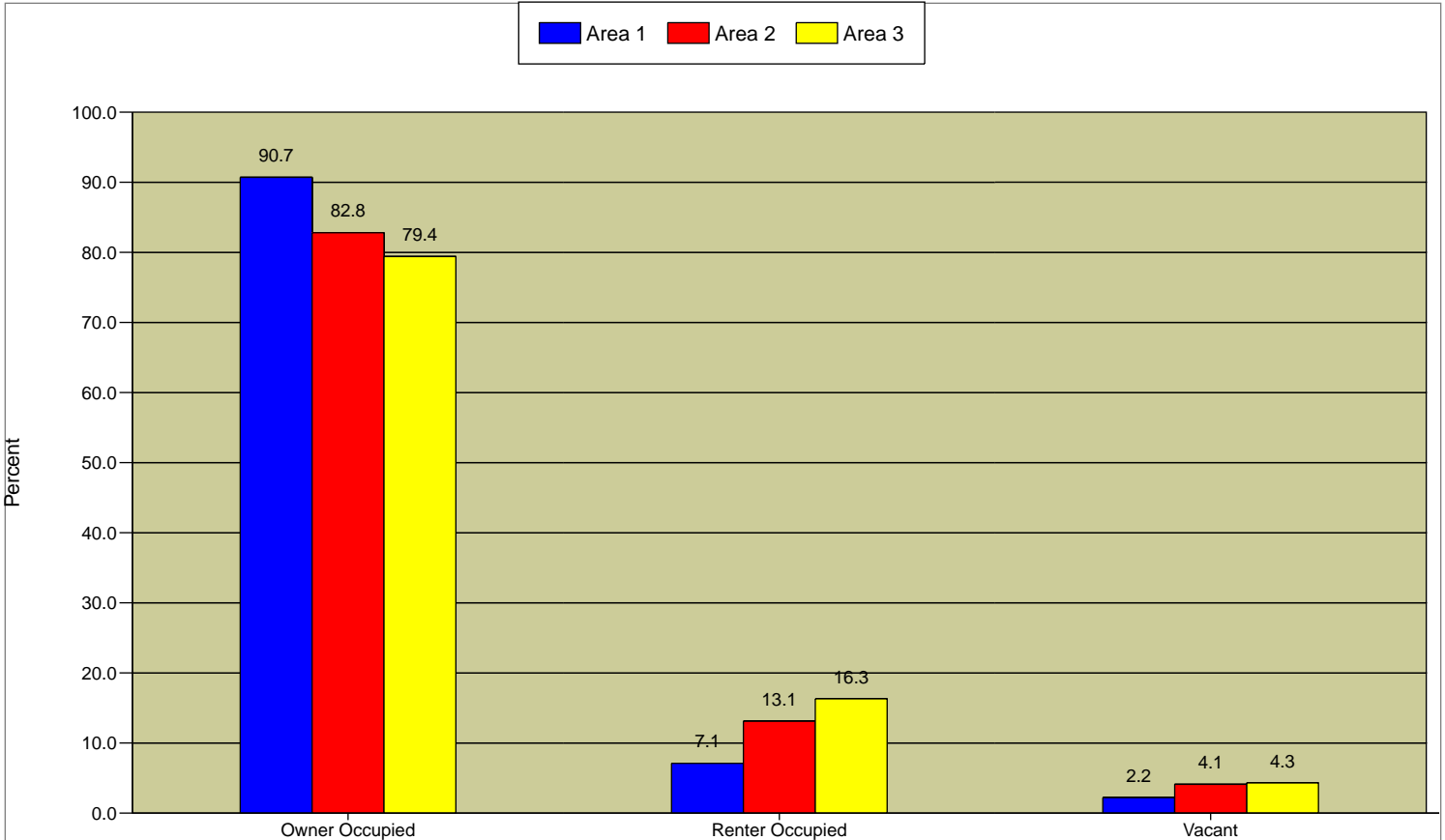


855 westglen Village
 Latitude: 38.577679
 Longitude: -90.563942

855 Westglen Village Dr Ganz Tract Radius: 1 Miles	855 Westglen Village Dr Ganz Tract Radius: 3 Miles	855 Westglen Village Dr Ganz Tract Radius: 5 Miles
--	--	--

	4,239	24,767	54,435
2000 Housing Units			
Owner Occupied Housing Units	91.2%	84.3%	81.0%
Renter Occupied Housing Units	7.2%	13.3%	16.1%
Vacant Housing Units	1.6%	2.4%	2.9%
2009 Housing Units	4,374	25,998	57,088
Owner Occupied Housing Units	90.7%	82.8%	79.4%
Renter Occupied Housing Units	7.1%	13.1%	16.3%
Vacant Housing Units	2.2%	4.1%	4.3%
2014 Housing Units	4,388	26,183	57,563
Owner Occupied Housing Units	90.5%	82.3%	78.7%
Renter Occupied Housing Units	7.2%	13.1%	16.6%
Vacant Housing Units	2.3%	4.6%	4.7%

2009 Housing Units



Median Home Value

	\$158,350	\$156,979	\$172,280
2000	\$205,452	\$203,848	\$224,707
2009	\$230,168	\$226,644	\$248,546
2014			

Data Note: Detail may not sum to totals due to rounding.

Source: U.S. Bureau of the Census, 2000 Census of Population and Housing. ESRI forecasts for 2009 and 2014.