



# For Sale

Site Zoned C4

Revised Pricing!  
\$174,000

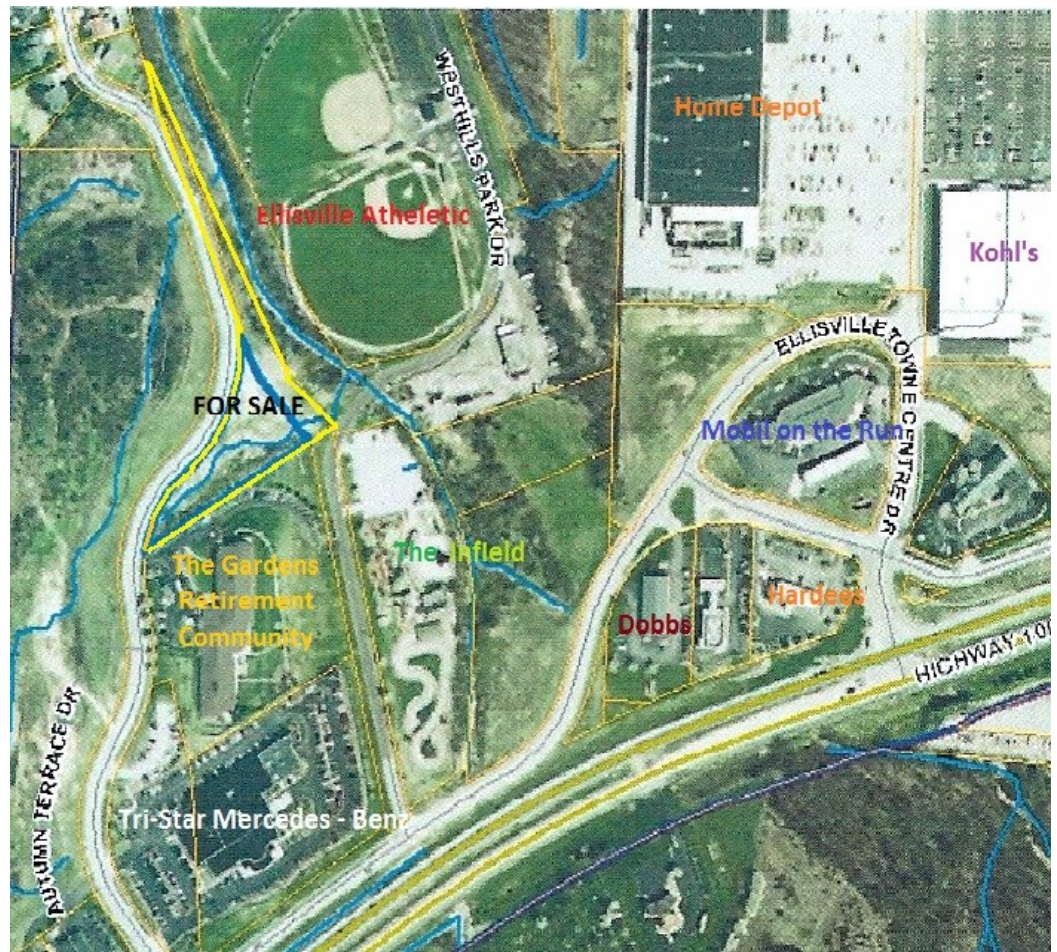
## Commercial Land Available **FOR SALE**

16237 & 16243 Autumn View Trails

Ellisville, MO 63011

### Site Characteristics

- PRICE REDUCTION!!!!
- Two Access Points to Property.
- Site Zoned C-4 Ellisville Business Park
- Next to Home Depot, Dobbs & Kohl's
- Lot Priced at \$2.61 per Square Foot.
- Utilities Available.



For Additional

Information Contact

Charles St. Onge, CCIM

Direct: (636) 451-2725

E-Mail:

cstonge@hughes.net

Fax: (636) 451-5803

P.O. Box #14

Wildwood, MO 63040

www.stongemanagement.com



Information contained herein has been obtained from the owner of the property or from other reliable sources and is subject to change without notice. The Broker and Owner do not guarantee the accuracy of this information. Owners and Brokers make no representation as to the environmental or other physical conditions of the property and recommend that the Purchaser/Tenant investigate the property to their satisfaction.

Visit our Website

www.stongemanagement.com