

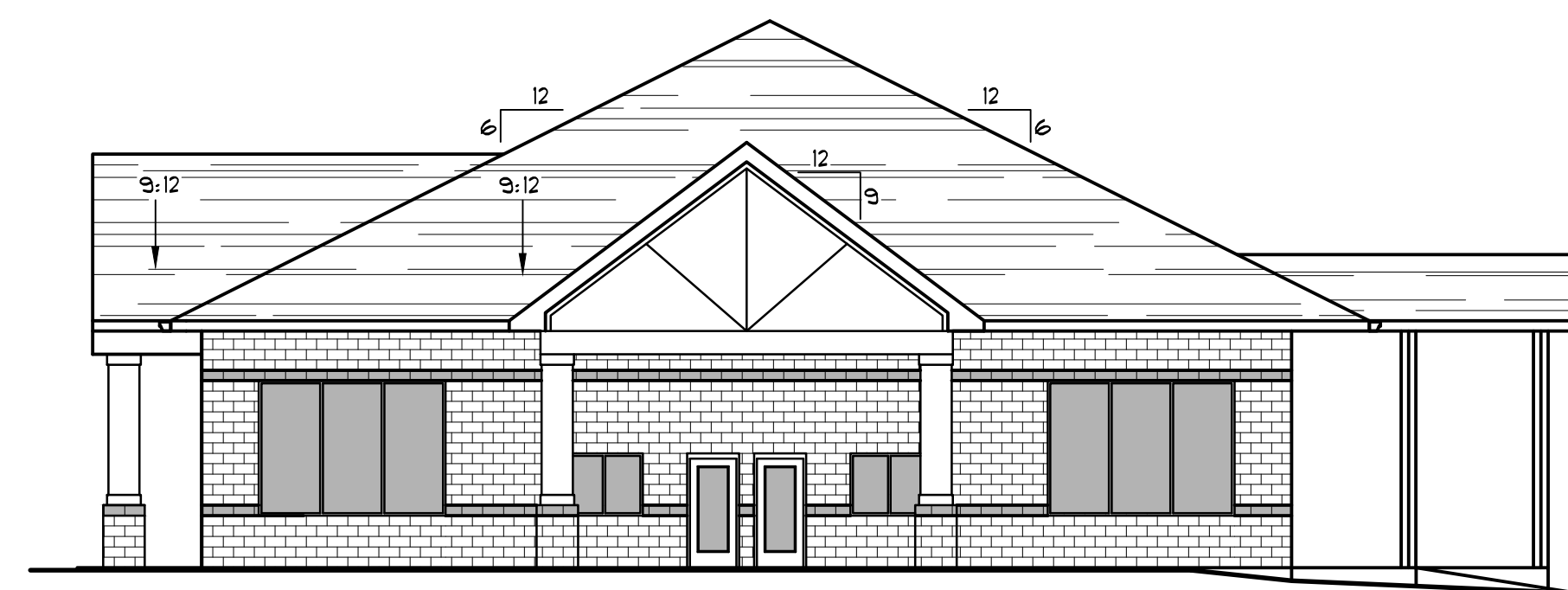
**SOUTH ELEVATION**

3/32" = 1'-0"



**NORTH ELEVATION**

3/32" = 1'-0"



**EAST ELEVATION**

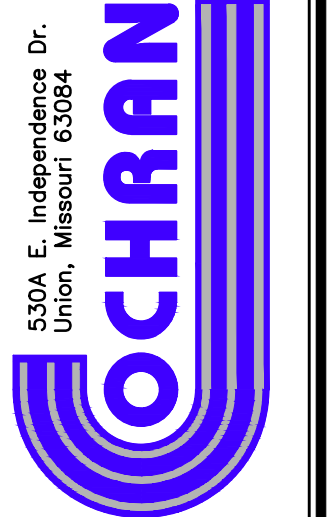
3/32" = 1'-0"



**WEST ELEVATION**

3/32" = 1'-0"

636-584-0540 (ext.)  
636-584-0512 (fax)  
mailto:ochran.com



530A E. Independence Dr.  
Union, Missouri 63084

Missouri State Certificate  
of Authority Numbers:  
Survey : 000380  
Engineering : 001655  
Architecture : 2002014240

Three working days prior to  
the start of any excavation  
call 1-800-463-RTT for utility  
location information.  
All OSHA rules & regulations  
and state rules for these  
construction activities must be  
strictly followed (e.g. trenching,  
blasting, etc.).

PRELIMINARY

Brian S. Gentges, Architect  
MO# A-2004024863

**BUSINESS CENTER**  
*St. Onge Management & Exchange Corp.*  
419 Old State Road  
Ellisville, MO 63011

DATE	REVISION	DESIGN BY	APPROVED BY
		JEM	BSG

DATE: June 1, 2022  
SCALE: AS NOTED  
PROJ. NO.: 22-9013  
DWG. NO.: A2.1