

SURVEY OF A PARCEL OF LAND IN
 PART OF LOT 12 OF THE
 SPRINGER & BOYLAN'S SUBDN.
 SECTION 29 AND 32, T45N-R4E.
 ST. LOUIS COUNTY, MO.
 CITY OF ELLISVILLE

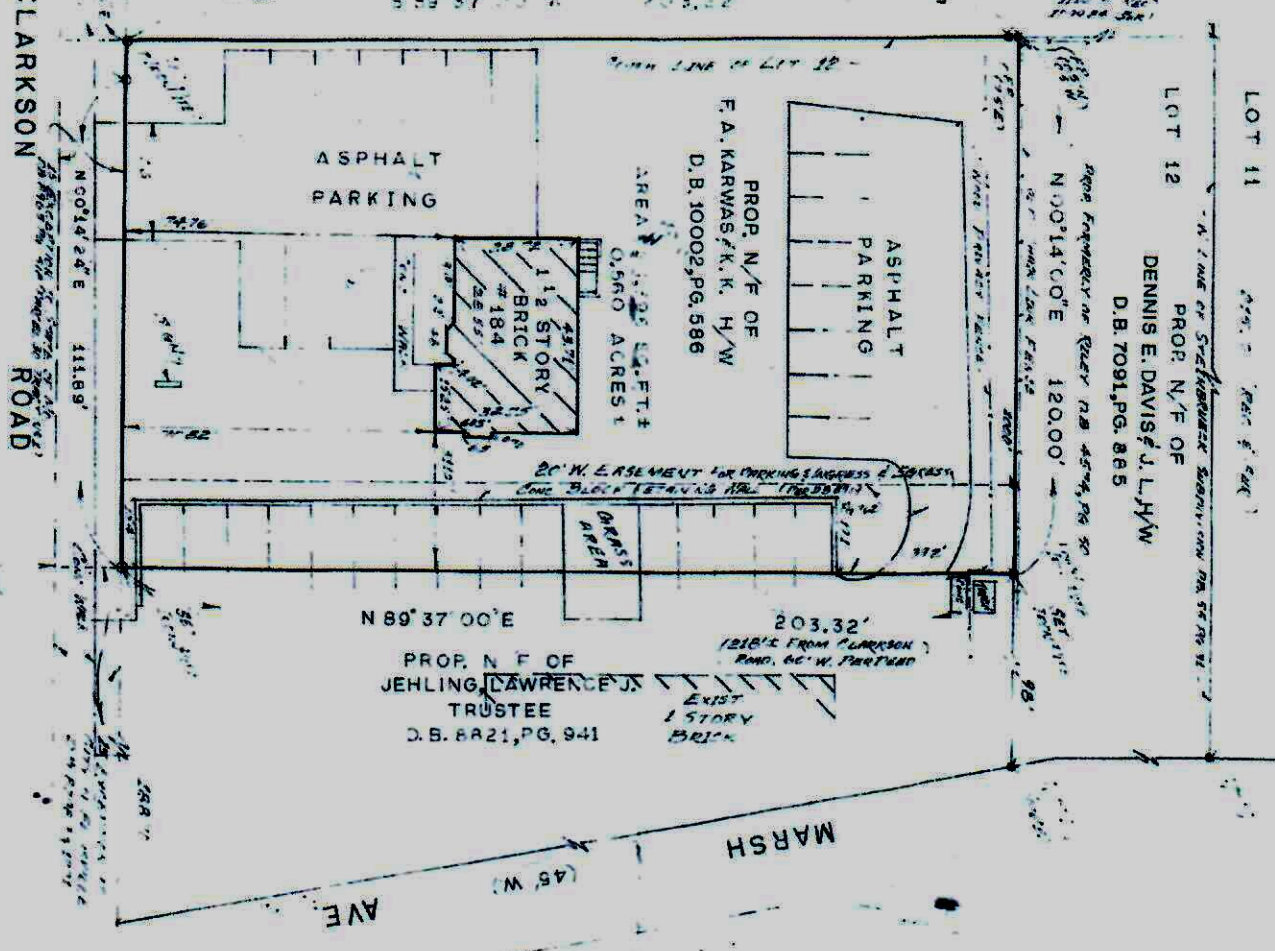


THIS IS TO CERTIFY that at the request of FREDERICK
 KRISTE RAYMS, HERMAN VALLEY BANE and CHARLES W. BANE
 the month of JANUARY, 1964, made a survey of a certain part
 part of Lot 12 of SPRINGER & BOYLAN'S SUBDIVISION of which
 according to the plat thereof recorded in the Book of Maps
 11, Lewis County (former county) Missouri, and in the
 system, this last survey was made in accordance with the
 requirements of the Standards of Practice of the Missouri
 Surveyors' Board for Architects, Engineers and Surveyors.

IN WITNESS WHEREOF, I have signed this certificate
 MAY 4
 JAMES ENGINEERS IN SURVEYING

DRAWN BY
 JAMES ENGINEERS IN SURVEYING

NOTES:
 1. Source of title - Original plat of 1884, recorded in
 November 8, 1891.
 2. No building lines and easements per the plat of 1884.
 3. Easement - 20 feet wide easement for parking, access to
 4. Easement - 20 feet wide easement for parking, access to
 5. Easement - 20 feet wide easement for parking, access to
 6. Easement - 20 feet wide easement for parking, access to
 7. Easement - 20 feet wide easement for parking, access to
 8. Easement - 20 feet wide easement for parking, access to
 9. Easement - 20 feet wide easement for parking, access to
 10. Easement - 20 feet wide easement for parking, access to
 11. Easement - 20 feet wide easement for parking, access to
 12. Easement - 20 feet wide easement for parking, access to
 13. Easement - 20 feet wide easement for parking, access to
 14. Easement - 20 feet wide easement for parking, access to
 15. Easement - 20 feet wide easement for parking, access to
 16. Easement - 20 feet wide easement for parking, access to
 17. Easement - 20 feet wide easement for parking, access to
 18. Easement - 20 feet wide easement for parking, access to
 19. Easement - 20 feet wide easement for parking, access to
 20. Easement - 20 feet wide easement for parking, access to



REV.	DATE	BY	DESCRIPTION	SURVEY NUMBER
1				
2				
3				
4				
5				
6				
7				
8				
9				
10				
11				
12				
13				
14				
15				
16				
17				
18				
19				
20				

JAMES ENGINEERING
 &
 SURVEYING CO., INC.
 ENGINEERS PLANNERS SURVEYORS
 7810 TOWNSHIP BLVD. S. 300 CLAYTON, MO. 63104
 PHONE: (314) 721-4000 FAX: (314) 721-4000