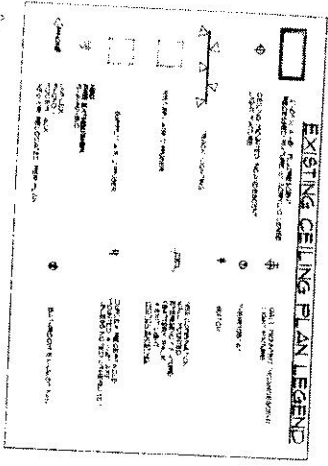
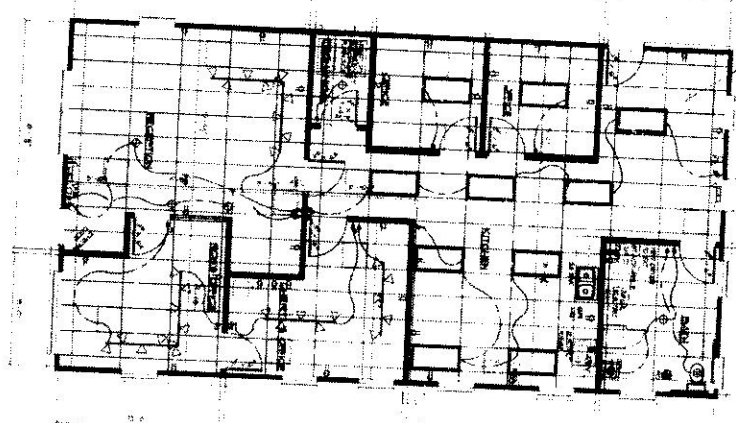
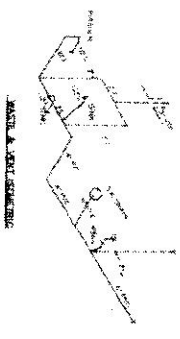
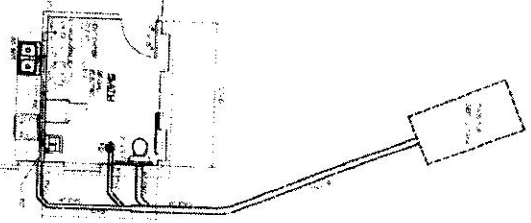


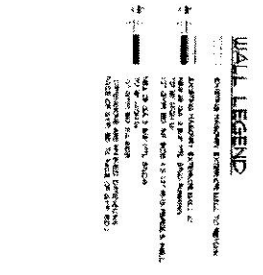
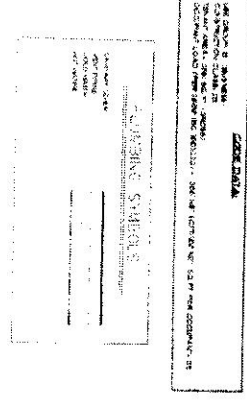
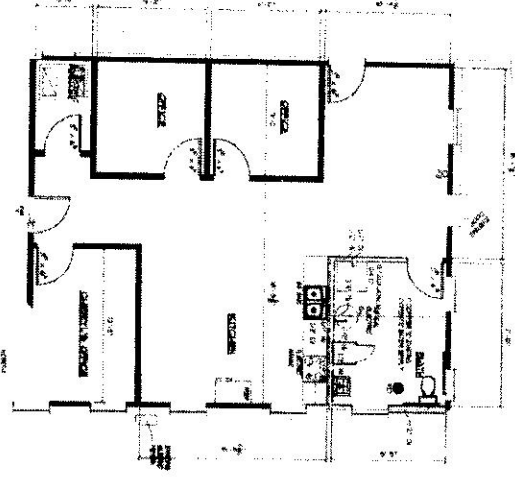
ELECTRICAL / MECHANICAL PLAN



PLUMBING SANITARY PLAN



PLUMBING SUPPLY PLAN



PROPOSED INTERIOR RENOVATION FOR
McQUERRY'S ONE HOUR HEATING and COOLING
 17301 OLD MANCHESTER RD.
 WILDWOOD MO.



Steven Dye Architects
 680 Lincoln St., Ballwin, Mo. 63024
 Phone/Fax (636) 267-5500
 ARCHITECTS INTERIORS PLANNERS GRAPHICS

A-2

PROJECT NO.	200001
DATE	4/17/06
SCALE	AS SHOWN
DRAWN BY	SD
CHECKED BY	SD
APPROVED BY	SD
DATE	4/17/06